



Data Collection for the Shop Floor

riteTIME is what you need for easy and accurate touchscreen data collection. Designed with the manufacturing process in mind, riteTIME provides real-time data tracking for designers, line employees, maintenance personnel and management reporting.

riteTIME is specifically designed to automate the tracking of jobs, work orders and maintenance items which have historically been tracked manually.

With riteTIME, shop floor data is typically tracked using touchscreen monitors or touchscreen computers, however engineers can also track their work on products before it goes to production by using their desktop PC.

The touchscreen terminals are typically located on the shop floor, conveniently positioned where production line employees can enter job information as they work.

Engineers or designers typically work at a desktop PC. With riteTIME loaded on their desktop PC, engineers and designers can track the work they do on jobs and work orders without leaving their work area.




riteTIME on a touchscreen

The riteTIME system is a self-contained production data tracking system. It can run completely independent of other systems or in conjunction with SYSPRO, MRP, time and attendance or other systems.

riteTIME uses a Microsoft SQL Server database for data storage and manipulation. Transactions are recorded in real-time and are instantly available for reporting or updating to other systems. riteTIME was designed to be a user-configurable system that the client can setup and determine the operational processes that will be tracked.

Integration to other systems is typically performed by simply changing SQL Stored Procedures to retrieve desired data and populating other SQL based systems.

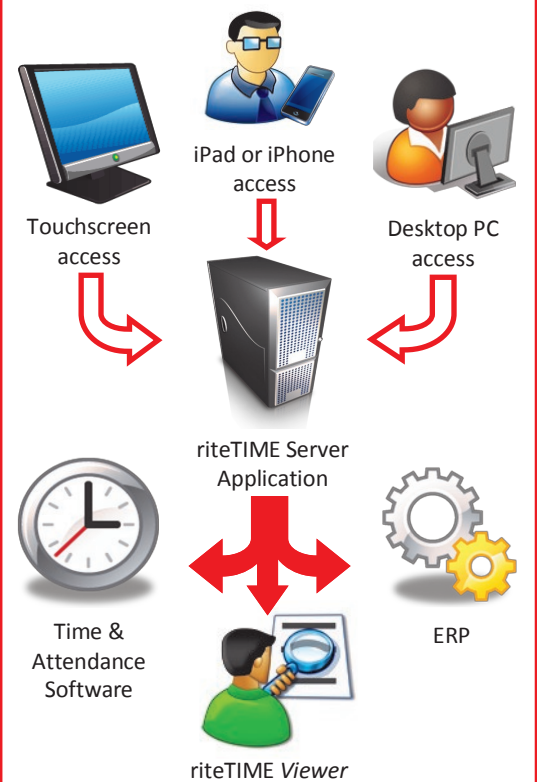
SYSPRO data elements can be imported, providing current listings of available jobs, operations and other required data.

This is an overview diagram of the riteTIME system and its relationship to other systems. 

FEATURES and RECENT ENHANCEMENTS:

- ▶ **Group transactions** – this allows a supervisor or lead person to punch in a group of employees all at once instead of each employee logging in separately. The supervisor/lead person can add timeclock punches, job punches and other transactions by simply selecting the employees to receive the punch. riteTIME will automatically record a punch or hours amount for all of the selected employees.
- ▶ **Individual employee lookup and editing by supervisors** - supervisors can view and edit specific employees times on demand.
- ▶ **Standardized Import/Export Module** – this module is used to import and export data between riteTIME and other systems such as SYSPRO and accounting systems. Standard formats are provided so the client can format their data to be imported and automatically populated in the riteTIME system. Standard exports are also provided to extract pertinent information from riteTIME to be used in other systems. The export also includes standard format files for use in Excel and other applications.
- ▶ **Variance Reporting Module** – this is a report which analyzes the time worked on jobs (tracked by riteTIME) and data retrieved from a time and labour application where employees clock in and out for payroll. The report is a comparison between what the employee is getting paid for and the hours they actually logged on jobs.
- ▶ **Instant Searches** – used to instantly lookup jobs, operations and other tracked data to see where the product is and what work had been performed for that product.
- ▶ **Default Values by Terminal** – Each terminal can be assigned a set of default values which will automatically populate the information when punching on a particular terminal. This is very useful when the client needs to record the work center for jobs and have it default to a particular value based on the terminal where the employee is punching.
- ▶ **Viewing Grids With Column Sorting** – all grids allow the employees and supervisor to instantly change the sorting by simply touching the title bar for the column they would like to sort by. Touch the title bar once to sort ascending, touch the title bar again to sort descending.
- ▶ **Viewing Grids Date Range Filtering** – all viewing grids in the system allow the employee or supervisor to select the date range of data to view.
- ▶ **Multiple Jobs (Job Sets)** – this feature allows employees to “group” jobs together when multiple jobs are all started and stopped at the same time. When the employee Stops the job set, they can divide the hours evenly for each job, each job receive the full amount of time or divide the time by job according to quantities entered for each job.
- ▶ **Indirect Hours Entry** – clients can enable or disable employees to enter Indirect Hours.
- ▶ **Multilingual Support** – the riteTIME Terminal application currently supports English, Spanish and French.

riteTIME SYSTEM OVERVIEW:



riteTIME Extensions Comparison

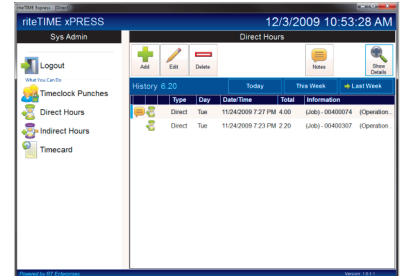
riteTIME introduces three new extensions:

Feature	riteTIME	riteTIME Express	riteTIME Rapid Entry
Touch screen data entry	•	•	•
Desktop data entry	•	•	
Timeclock punch entry	•	•	•
Job punch entry (punch In and Out for jobs)	•	•	•
Job Set entry	•		
Direct Hours entry	•	•	•
Indirect Hours entry	•	•	
View timecard activities (view riteTIME transactions)	•	•	
Supervisor editing	•	•	
Generic job query	•	•	
Multi-lingual	•		
Main window graphic (company logo)		•	•
Automatic job logout on timeclock punches		•	•
Automatic job login on timeclock punches		•	•
Timeclock group punching (without auto job logout)	•	•	
Timeclock group punching (with auto job logout)		•	
Transaction history displayed on entry screens		•	•
Automatic lookup on fields when entering data	Manual touch	•	•
Entry data validation	•	•	•
Employee Messaging	•		
Password prompting (when enabled)	•	•	•
Terminal Activity displayed on main window		•	•
Auto-break scheduling for Breaks and Lunches	•	•	•
On-screen keyboard (part of rT)		•	•
Approvals	•	•	
Auto job STOP when STARTING a new job and cannot work multiple jobs at the same time			•

The new extensions can be used with the standard riteTIME product and extend the capabilities of the riteTIME suite.

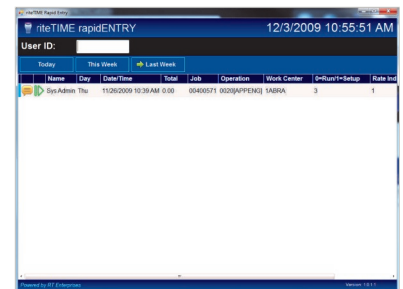
riteTIME Express

This extension is a new design for the data entry client application. It provides a more graphical and even easier-to-use interface while providing enhanced data visibility to the employee. It also incorporates a more streamlined data entry process for the employee to decrease the time it takes to log their labour against jobs.



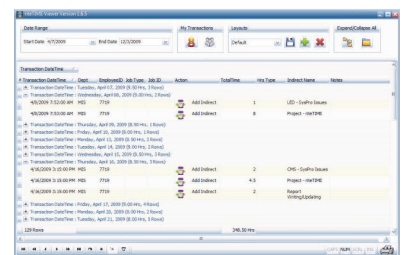
riteTIME Rapid Entry

This extension is a client application optimized for barcode-only entry. This is perfect for clients who want employees to log in and out of individual jobs as quickly as possible. Rapid Entry is also great for environments where multiple employees may need to share a wireless scanner and may not have physical contact with the terminal.



riteTIME Viewer

This is a desktop client application for supervisors, managers and administrative personnel that need to view the riteTIME data and perform grouping and filters to better analyze the data. Users can save their preferred layouts and also immediately export to Excel for additional reporting.



**Put the "rite" Tool
in the "rite" Hands
at the "rite" Time**