



slect
Solution Delivery



SOLUTIONS FOR MANUFACTURERS

If you can answer “Yes” to any of the following then we can help:

- ◆ Our production plan is in a spreadsheet and it won't cope with the complexity of our processes or the increasing size of the company.
- ◆ Customer delivery performance is not good enough because we can't accurately predict when orders will be ready.
- ◆ Our purchasing department don't really know when materials are needed, so we tend to have either too much stock or sometimes shortages.
- ◆ It's difficult to see whether we are achieving the plan for this week.
- ◆ Operators write out time / job sheets today and then we key them into a computer system tomorrow.

Preactor is a planning tool in which we can model your processes and capacity and then work out a sequence in which to run the jobs. Enabling you to predict material shortages and late deliveries to customers whilst there is still time to do something about it. Then run “What-If” scenarios to test the effects of adding more resources and so on.

riteTIME is software used to collect time sheet information directly from the shop floor and lets you use this data to measure efficiencies, track operators and optionally update Preactor with “Mid-Batch Updates” to show progress against the plan.

sl-ect is a partner for both riteTIME and Preactor and can provide system design, implementation, training and support. Plus we'll get your company data from any source. We'd prefer you to have an ERP system based on a SQL database, but Excel or CSV files are fine!

Turn the page for more details on the potential benefits of these systems.



It's 3:00pm **TUESDAY**. Your factory is running at an efficiency of 68%. Do you want find out **NOW** or next **MONDAY**?

PLANNING & SCHEDULING



World Class
Advanced Planning & Scheduling
(APS)
Locally Delivered

TIME SHEET AUTOMATION



Automated Timesheet Entry
Efficiency Reporting
Payroll Reconciliation
Preactor Mid-Batch Updates

"What would happen if someone took away Preactor?"

For a start we would have to go back to holding high buffer stocks because purchasing would not have an accurate plan to work to.



Previously we just had a spreadsheet list of jobs that needed doing, now we have a colour coded Gantt chart view that is so easy to use when reacting to changes in the production environment or delays from suppliers. Preactor ensures that we have a valid sequence of running the related works orders, with "Work-To" lists for each resource.

Shop-floor has visibility of the plan and they trust it because they know from experience that it works. Our Production Director knows that he can make decisions based on the capacity graphs because nothing is planned in the past, which is vital because we frequently use temporary production staff.

And visibility for UPL means we can give visibility to our customers of the planned delivery dates."

Steve Snelson - Planning & Warehouse Manager
Universal Products Ltd

sl-ect limited
3 Back Knowl Road
Mirfield
West Yorkshire
WF14 9SA

Tel. 0844 358 0777
Email. office@sl-ect.co.uk
www.sl-ect.co.uk

Preactor is the world leader in production planning and scheduling software used by a wide range of businesses. These are a mixture of small, medium and large companies located in more than 60 countries.

Typically you will first create a model of your process by creating resources and adding shift patterns to represent the available capacity. Then Preactor will import works orders or MRP recommendations, maybe from an ERP system, to represent the loading on the resources. Complex rules or manual drag and drop methods allow the planner to create the best sequence in which to run the jobs.

If the plan depends on the future supply of purchased materials & current stock then you can import those too. And if you have multi-level BOMs then Preactor can run pegging rules to link together the producing and consuming orders to make a valid plan.

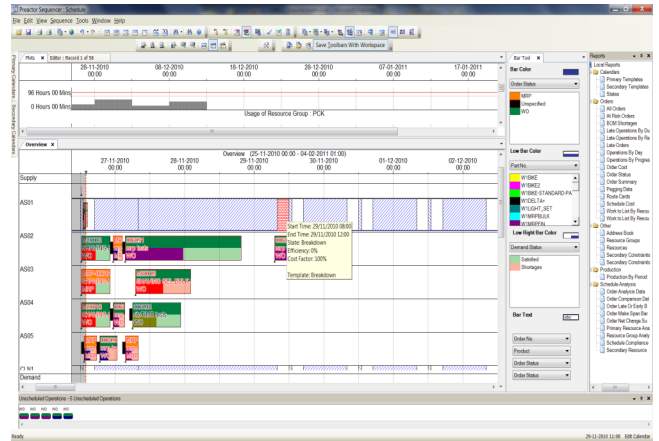
Benefits

Preactor has a proven return on investment.

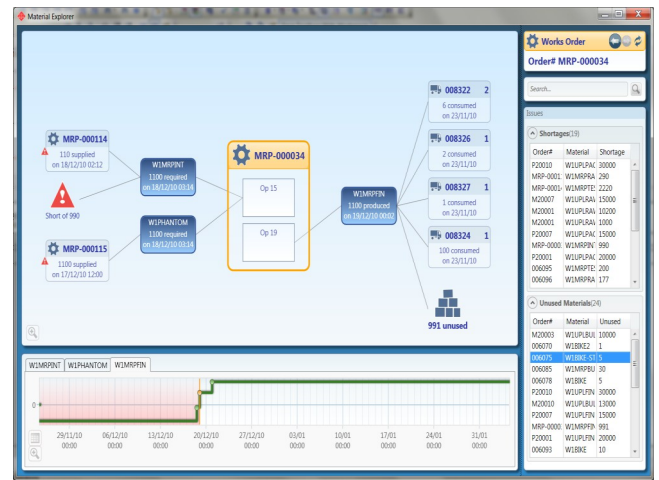
- **Improvement in productivity:** get more from what you already have. Eg. reducing the number of set-ups required.
- **Reduction in raw materials inventory:** synchronize the purchasing MRP with an achievable schedule.
- **Reduction in make-span time:** reduce WIP that slows down production flow.
- **Improvement in customer service:** increase on-time deliveries with better promises and early warning of potential lateness.
- **Planning agility:** react quickly to changes in materials supply, customer demand or the availability of resources.

Over 100 case studies available at www.proof.preactor.com

Gantt Chart view of the production schedule:



Material Explorer showing related jobs and highlighting stock shortages:



TIMESHEET AUTOMATION



Easy to use screens:

Efficiency reporting:

Factory Performance Summary								
Week No	WO	Operation	Qty Good	Qty Scrap	Std Hrs Earned	Actual Run Hrs Time	Hrs Variance	% Efficiency
2010 08	006047	006047_001	123	2	61.50	91.66	-30.16	67.16
2010 08	006086	006086_001	13	0	6.50	8.69	-2.19	74.80

riteTIME is a set of simple to use screens, designed to let your production staff select the job they are working on and record their times, quantities and notes directly into a database.

Benefits

How will riteTIME help your business?

- A labour and machine time tracking system, with optional integration to Sage and Preactor.
- Efficient, paperless collection of time sheet data.
- Employees or supervisors clock people or machines onto jobs, so written time sheets are no longer needed.
- Reconcile against your payroll data and track people's time as they move between jobs, departments or projects.
- Calculate the actual costs of making your products and show variances against standard costs.
- Get real-time "WIP Tracking" updates against your plan.
- Including scrap quantities, with reason codes.
- Utilise simple touch-screen technology and bar-coded data entry to ensure accuracy and ease of use on the shop floor.

